



if it flows,  
we go with it

1.800.665.4499  
barrplastics.com

# Dock Hardware

## Galvanized Steel Dock Hardware

Our standard hot-dipped, galvanized steel dock hardware is manufactured from 1/4" thick steel while our heavy duty hardware is manufactured from 3/8" thick steel.

Using the right materials the first time will ensure that you have a dock that will be able to ride out those high winds and choppy waters. All dock hardware is made from 0.5" diameter carriage bolts and can be used with 2"-4" thick lumber.

Need some help knowing where everything goes? Kits and plans are available - and our experienced staff can help you answer any questions.





if it flows,  
we go with it

1.800.665.4499  
barrplastics.com

## Corner Brackets

All galvanized dock hardware is available in standard or heavy duty models unless otherwise noted. Heavy duty part numbers are identified with an “-HD” at the end.



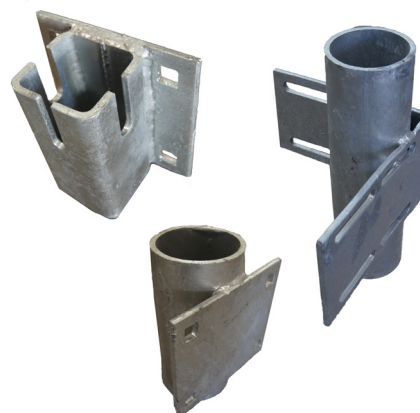
Part #	Description
H-OCM / H-OCM-HD	Outside Corner Male Bracket
H-OCMM / H-OCMM-HD	Outside Corner Male-Male Bracket
H-OCF / H-OCF-HD	Outside Corner Female Bracket
H-OCFF / H-OCFF-HD	Outside Corner Female-Female Bracket
H-OCMF / H-OCMF-HD	Outside Corner Male-Female Bracket



Part #	Description
H-IC / H-IC-HD	Inside Corner Bracket
H-OCE / H-OCE-HD	Outside Corner Bracket

## Holders/Retainers

Part #	Description
H-CRS*	Chain Retainer
H-ICP3*	Inside Corner- 3" I.D Pipe Holder
P-3*	3" Pipe Holder



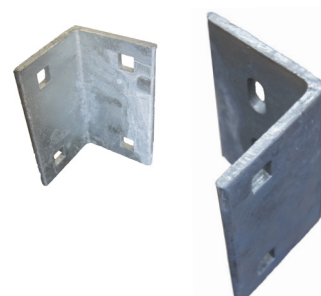


if it flows,  
we go with it

1.800.665.4499  
barrplastics.com

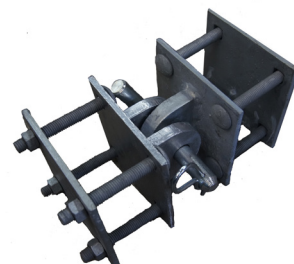
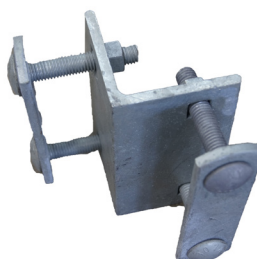
## Angle Brackets

Part #	Description
H-A / H-A-HD	Angle Bracket
H-CA / H-CA-HD	Cleat Angle Bracket



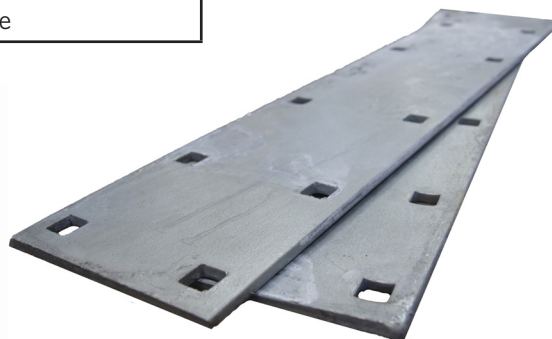
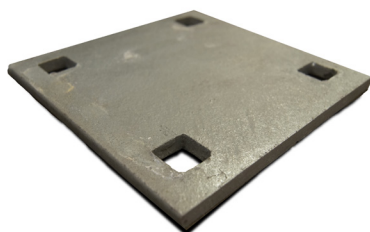
## Single T Brackets

Part #	Description
H-SM / H-SM-HD	Single "T" Male
H-SF / H-SF-HD	Single "T" Female



## Plates

Part #	Description
H-W / H-W-HD	Washer Plate
H-B / H-B-HD	Backup Plate
H-SP *	Splice Plate





if it flows,  
we go with it

1.800.665.4499  
barrplastics.com

## Fasteners

Part #	Description	Size (in)
B852-500	Carriage Bolt - Hot-Dipped Galvanized	3/8 x 3
B852-509	Carriage Bolt - Hot-Dipped Galvanized	3/8 x 6
B852-513	Carriage Bolt - Hot-Dipped Galvanized	3/8 x 8
B852-588	Carriage Bolt - Hot-Dipped Galvanized	1/2 x 2 1/2
B852-590	Carriage Bolt - Hot-Dipped Galvanized	1/2 x 3
B852-594	Carriage Bolt - Hot-Dipped Galvanized	1/2 x 4
B852-595	Carriage Bolt - Hot-Dipped Galvanized	1/2 x 4 1/2
B852-596	Carriage Bolt - Hot-Dipped Galvanized	1/2 x 5
B852-597	Carriage Bolt - Hot-Dipped Galvanized	1/2 x 5 1/2
B852-599	Carriage Bolt - Hot-Dipped Galvanized	1/2 x 6
B852-602	Carriage Bolt - Hot-Dipped Galvanized	1/2 x 8
B852-605	Carriage Bolt - Hot-Dipped Galvanized	1/2 x 9
B852-607	Carriage Bolt - Hot-Dipped Galvanized	1/2 x 10
B852-610	Carriage Bolt - Hot-Dipped Galvanized	1/2 x 12
B856-418	Flat Washer - Hot-Dipped Galvanized	3/8
B856-422	Flat Washer - Hot-Dipped Galvanized	1/2
B856-423	Flat Washer - Hot-Dipped Galvanized	9/16
B856-518	Lock Washer - Hot-Dipped Galvanized	3/8
B856-522	Lock Washer - Hot-Dipped Galvanized	1/2
B856-018	Hex Nut - Hot-Dipped Galvanized	3/8
B856-022	Hex Nut - Hot-Dipped Galvanized	1/2
B854-504	Hex Head Lag Bolt - Galvanized	3/8 x 4
B854-509	Hex Head Lag Bolt - Galvanized	3/8 x 6
B854-599	Hex Head Lag Bolt - Galvanized	1/2 x 6
B854-603	Hex Head Lag Bolt - Galvanized	1/2 x 8
B854-607	Hex Head Lag Bolt - Galvanized	1/2 x 10
B854-610	Hex Head Lag Bolt - Galvanized	1/2 x 12
5164-193	SS Tapping Screw Truss Socket #2 Robertson Round Head	#10 x 1
5164-197	SS Tapping Screw Truss Socket #2 Robertson Round Head	#10 x 1 1/2
5164-200	SS Tapping Screw Truss Socket #2 Robertson Round Head	#10 x 2
F-3435B	Connector Pin w/Click Pin	3/4 x 3 1/2

