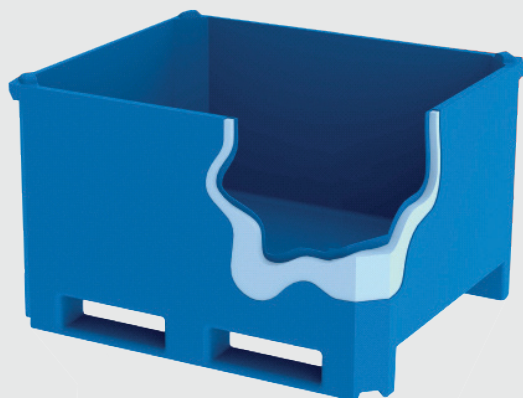


Double Wall Insulated Bins

Processing PE Containers



The robust triple-wall design yields longer life and reduced long-term costs while the ergonomically designed one-piece construction facilitates easy cleaning and sanitation. The closed cell core design will not absorb liquid, thus extending life and optimizing hygiene. Ease of repair vs. single wall containers that must be thrown out and replaced once damage occurs. To help keep our food safe and as fresh as possible, the Saeplast PE Containers are a must for all processing floors.



460PE



750PE



875PE



1050PE

Part #	Description	USG	LTR	Lbs	Kg	Inside/Outside (inches)		
						L	W	H
460 PE	Insulated PE Container	111	420	110	50	45 /49	37/41	16/23
660 PE	Insulated PE Container	170	640	132	60	46/49	38/41	24/30
750 PE	Insulated PE Container	194	734	156	70	45/48	37/40	28/35
875PE	Insulated PE Container	227	860	170	77	45/48	37/40	32/40
1050PE	Insulated PE Container	269	1018	208	94	45/48	39/42	39/46



Accessories



Insulated Lids

Part #	Description
DC18-35L	Insulated lid for DX-Series bins
D18-35L	Insulated lid for D-Series bins
D660L	Insulated lid for D500/D600 bins
D1000LNS	Insulated lid -new style for D1000
D1000LA	Insulated lid -new style for D1000
D305L	Insulated lid for D305
DX310L	Insulated lid for DX310 & DX310F
DC18-33LP	Insulated lid for DX333

Other Accessories

Part #	Description
C010	2" drain plug
C050	2" O-ring
C650S	Small footpads
C650L	Large footpads
C015	1" drain plug to FPT adapter
C016	1.5" drain plug to FPT adapter
C400	Nylon handle
C450	Adjusting stud
C465	3/4" x 3/4" EPDM "D" seal with adhesive backing (black)
C470B	Large clamp (for D337)
C500	Poly rope
C550	4 hole rubber lid strap
C555	5 hole rubber strap
C600	Corner grommet
C610-SS	Stainless steel screws (for C600)
YCLIPB2400	Y clip fastener
D332FB	False bottom for D327, D332 & D335