



celebrating
50 years

1.800.665.4499
barrplastics.com

Storm Drain Protection

Storm Sentinel Adjustable Catch Basin Insert

The Storm Sentinel® adjustable catch basin insert helps companies comply with Stormwater Pollution Prevention Plans and Stormwater Best Management Practices by protecting your storm drains and catch basins. It is the sure way to catch oil and sediment headed into storm drains and sewers. Optionally equipped with an oil-absorbent media in a screened bag, the Storm Sentinel® guards against any potential discharge.

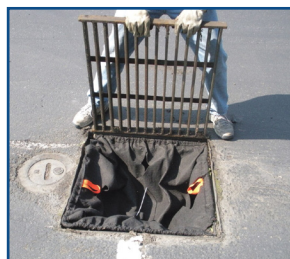
- 4341 & 4344 fit any size rectangular catch basin's from 16"x20" to 28"x36". XL version fits rectangular catch basin's up to 42"x42".
- 4340 & 4343 fit any size round catch basin from 27" to 29" in diameter.
- Up to 500 GPM overflow rate helps avoid ponding.
- Requires no special tools to install.
- Helps comply with NPDES, 40 CFR 122.26 when used as Best Management Practice in Storm Water Pollution Prevention Plans.
- Custom sizes available.
- Self supporting frame and easy installation.

Specifications:

- Material: 8oz polypropylene, non-woven geotextile fabric
- Flow rate: maximum overflow rate varies depending on the level of soil that has accumulated with the fabric (proper maintenance is mandatory to maintain maximum water flow). **500 gallons per minute (GPM) flow rate.**
- Removal capabilities: oil, grease, sediment, trash, hydrocarbons & debris
- Disposal: dependant on the nature of pollutants being collected. Should be in accordance with local, state, and federal regulations.
- Weight: Empty - 2-4 lbs (32-64oz)
Full - Dry; 30-50 lbs (13.6-22.7 kg), Liquid; 85-100 lbs (38-45.4 kg).



To install: Remove grate and adjust wire frame to fit in recess.



Place insert into recess and frame into corners. Replace the metal grate.



No part of the insert extends above the surface.



To remove: Simply lift the grate, grab the handle, and pull out the insert.