



The Carat S Belowground Tank

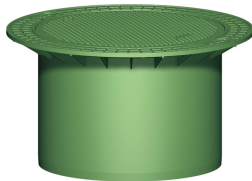
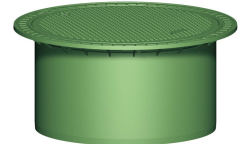


Choose your dome shaft:

Part #371010

Mini telescopic dome shaft

Infinitely adjustable from 29" - 37" earth cover above the tank, can be tilted by 5 degrees. Designed to allow pedestrian loading, this product includes a PP cover with childproof lock. Colour: Grass Green. Length: 14.2", ϕ Inner: 23.6", ϕ Outer: 30.6", weight: 13 lbs. This well thought out cover for the Carat S underground tank is ideal for garden use.



Part #371011

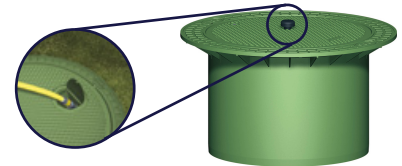
Maxi telescopic dome shaft

Infinitely adjustable from 29" - 41" earth cover above the tank. Designed to allow pedestrian loading, this product includes a PP cover with childproof lock. Colour: Grass Green. Length: 18.7", ϕ Inner: 23.6", ϕ Outer: 33.5", weight: 29 lbs. It serves as the sturdy cover for the Carat S underground tank. Ideal for household use.

Part #375117

Internal water connection box

Drain water directly from the tank. Easy retrofitting for telescopic dome shaft Mini or Maxi, hose connection 1"



Part #371003

Cast iron telescopic dome shaft

For vehicle loading - with class B cast iron cover. Infinitely variable from 31" - 41" earth covering over the tank. Length: 18.7", ϕ Inner: 23.6", ϕ Outer: 33.5". For use in the home and garden. The tank is flush with the ground.

Part #371011

Extension

Length: 19.7", ϕ 27.6". An earth covering of max. 59" can be implementing when using the extension and the telescopic dome shaft. For use with the basic Carat S tank with an earth covering of 40".

